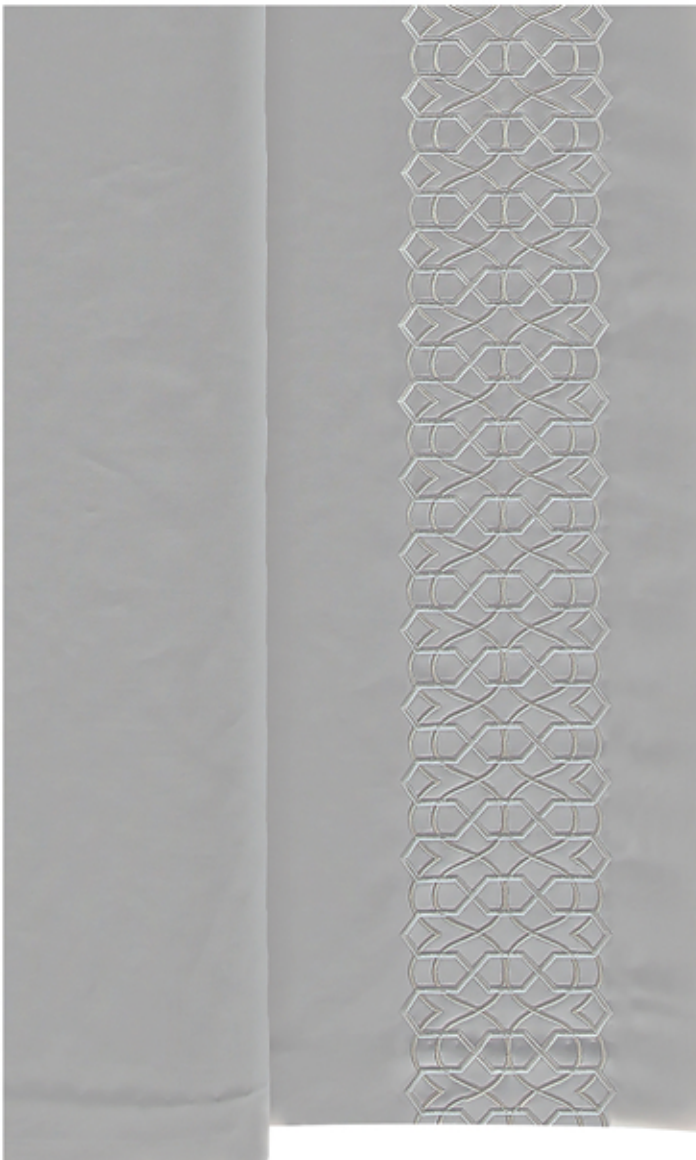


ARTEMESIA

VICTORIA BAIN EMBROIDERED TEXTILES



General Information

Description: A highly skilled digital machine embroidery technique.

Suitability: Leading edge.

Colours: This design can also be custom coloured. Contact us for details of our recommended base fabrics.

Dimensions: 3.9cm Repeat

Width: 11.5cm

Minimum Order: 6 Metres

Lead time: Approximate 5-6 weeks dependant on quantity.